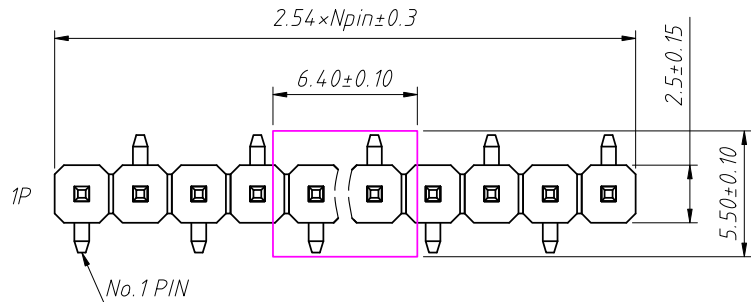
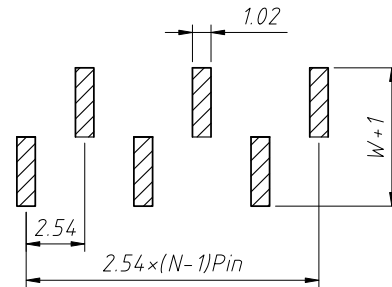


RoHS Compliance



T2 Type

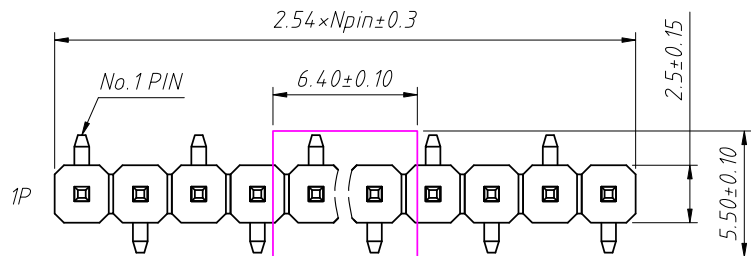
Recommended P.C.B Layout (Top Side)  
(PCB BOARD TOLERANCE ± 0.05)



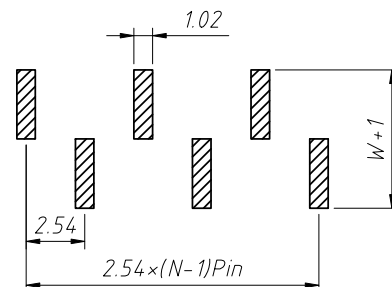
Material:  
Standard: PA6T  
Contact: Brass  
Insulator: Polyester, UL94 V-0

Electrical Characteristics:  
Rated Current: 3AMP  
Contact Resistance: 20mΩ Max  
Withstand Voltage: 1000V AC/DC  
Insulator Resistance: 1000MΩ Min

Mechanical  
Operating Temperature: -40°C ~ +105°C  
Max. Processing Temp: 230°C for 30-60 seconds  
(260°C for 5 seconds)



T1 Type

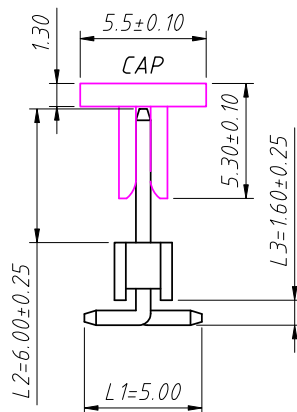
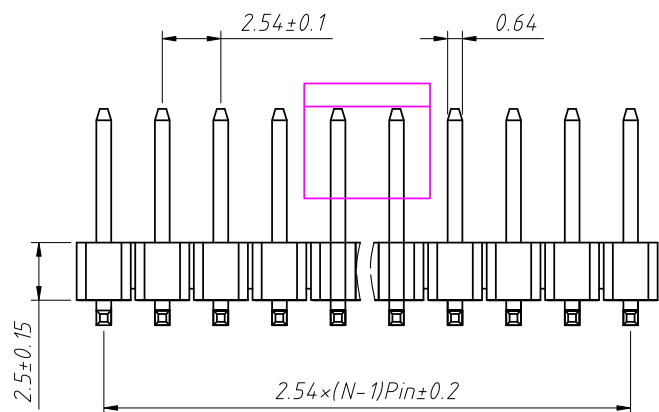


N=W/O Post

Order Information:

L-KLS1-207-2.50-1-XX-T1-L1xL2xL3-G0-N-R

L: RoHS  
Pin Header Series—  
207: 2.54mm  
Plastics Height:—  
1.50, 1.70, 2.00, 2.50 mm  
Per Row: Single layer—  
Pin: No. of Pins (1x40)  
SMT: T1 Type, T2 Type  
Size: L1xL2xL3  
Plating:—  
G0=Gold Flash G1=1u" Gold G10=10u" Gold  
G15=15u" Gold G30=30u" Gold  
Post: W=With Post N=W/O Post  
Packing:—  
0=PE Bag A=Tray T=Tube  
P=Tube+Cap R=Reel+Cap (B)



Dimension antitheses list (mm)				
ITEM	L1	L2	L3	Plastic Height
Standard	5.00	6.00	1.60	2.50
Nonstandard	---	---	---	---

ANGLE TOLERANCE	PROJECTION	Description:	2.54mm Pin Header	
±3°		Single layer, SMT, 1xN Pin		
GENERAL TOLERANCE	UNITS	mm	KLS P/N:	L-KLS1-207-2.50-1-XX-T1-L1xL2xL3-G0-N-R
x.x ±0.30	SHEET SIZE	A4		
x.xx ±0.20	Draw:	Daniel	2018-07-10	NingBo KLS ELECTRONIC CO.,L TD.
x.xxx ±0.10	Check:	Daniel	2018-07-10	